



## **MADISON WEAVERS GUILD**

**Vol. 44, No. 8**

**April 2017**

### **MWG BOARD**

**PRESIDENT: LAURIE ZIMMERMAN**

**SECRETARY: LINDA ALANEN**

**PROGRAM CHAIR: DIANNE RUCH**

**TREASURER: JANE VEA. [janevea@sbcglobal.net](mailto:janevea@sbcglobal.net)**

**MEMBERSHIP CHAIR: SUSAN FORTNEY**

**SALES: GEKE DE VRIES**

**NEWSLETTER EDITOR: EMILY NIE. [ricordanza@charter.net](mailto:ricordanza@charter.net)**

**HISTORIAN: PAT HILTS**

**WORKSHOP CHAIR: KATE LIEBER**

**EXHIBIT CHAIR: ANGIE ROBERTS**

**WEBSITE MANAGER: JULIE MOEHN**

## **MONDAY, APRIL 17, 2017**

**7:00 p.m. Oakwood Village, Westmoreland Room.**

## **DAKOTA MACE, NAVAJO**

## **PHOTOGRAPHER AND WEAVER**

Dakota Mace is a Navajo (Dineè) photographer from Albuquerque, NM. She received her M.A from the University of Wisconsin-Madison and her B.F.A from the Institute of American Indian Arts in Santa Fe, NM. She is currently a graduate student at the University of Wisconsin-Madison, focusing on developing a complex series of works that employ photography and weaving. Her work has led to investigating the issues of the romanticized representation of Native Americans, gender roles, stereotypes, identity, and of her Native culture. Through her research she has found that it is important to address these issues that are prevalent today for Native Americans and enforce a positive representation for Indigenous peoples.

### **Directions:**

Oakwood Village is located on Mineral Point Rd. in Madison. Turn south on

Island and take the drive to the left. Go past the Resale Shop and park in the visitor parking. The Westmoreland Room is in the Heritage Oaks Building. There is limited parking in front of the Heritage Oaks building.

## **Madison Weavers Guild March 2017**

MWG met March 20, 2017 at Oakwood West. 27 members were present.

Topic Post Its are up to sign up for presentations.

Barry Owens gave a detailed presentation on Boundweave. Handouts were quite thorough and appreciated. Questions followed with considerable interest.

Idea: Let newspapers know about weaving displays. Get it in the news.

Art Fair on the Square: \$50 to hold a space in the display. Send in a tax form. Remaining expenses will be pro-rated.

Slate of officers presented. Elections in April.

Show and Tell:

Barry Owens, Jane Veal, and Nancy Garden had examples of boundweave.

Laurie Zimmerman had chenille panels for her brother's room divider.

Kate Lieber and Linda Alanen had examples of twill gamp.

Randa Ferreira had her tapestry loom.

Take down at Middleton Library March 31 at 4-5pm.

Twill Gamp Workshop April 22-23. Sign up soon.

Respectfully submitted, Linda Alanen

## **PROGRAM SCHEDULE:**

April : Dakota Mace and annual election

May: Mary Ann Fairbanks- solar fabric

Our bylaws state that a slate of officers for consideration shall be presented at our March meeting for election at our April meeting. The following members have agreed to serve the Madison Weavers Guild for the 2017-2018 timeframe:

Laurie Zimmerman	President
Linda Alanen	Secretary
Kathy Derene	Treasurer
Susan Fortney	Membership Chair
Katie Lieber	Workshop Chair
Dianne Ruch	Program Chair
Geke de Vries	Sales Chair
Angie Roberts	Exhibit Chair
Emily Nie	Newsletter Editor
Julie Moehn	Website Manager
Pat Hilts	Historian

Please consider the following candidates and be prepared to vote at our April meeting. If there is anyone who would like to nominate themselves or someone else for a position, please contact Laurie Zimmerman at [lazybeck@yahoo.com](mailto:lazybeck@yahoo.com) as soon as possible

In addition, all of the Board members need your assistance, specifically, we are looking for:

- a co-chair or backup for the Exhibit Chair
- members for the Workshop, Program and Sales Committees
- computer help for the Sales Chair

And lastly at the last Board Meeting, discussion was held about Succession Planning - that is, to have some sort of program in place so that a member who decides to step up for a Board position doesn't have to walk in blind. Each of the Board members will be working on a list of "things they do" and each of us will be looking for someone to shadow us and take our place when we "retire" from our position. If anyone is interested in being a Board Member - in the very near future or even down the line - for a year or two or three, please either contact Laurie or any of the Board Members. With all of us working together, the time and labor involved is actually quite minimal. So please thoughtfully consider your involvement in the Guild. Thank you.

## EXHIBITS

Dear MWG Display Contributors,

First off a big Thank You goes out to Vickie Julka, Kathy Stanton, and their team for putting such a beautiful display together. Not sure who else was involved in the creation, thank you.

The display this year turned out absolutely beautiful, with so many talented weavers in our Guild, and their generosity to share in the creation of the display, we again showed beautifully.

Thank you Linda for helping in the dismantling of the display this past Friday. In the process of taking the display down there was a Library employee who came by and suggested we put some sort of recording device there with our display, to hear all the wonderful comments people have,

that was so kind of her to say. I also want everyone to know how much these displays are really appreciated, and inspire new weavers to our Guild.

Our next display will be in the Fall at the Pinney Library in Monona.

Next year 2018 we are set for February for the Middleton .

Happy Treading

Angie Roberts  
608 219 8490



## ANNOUNCEMENTS

"We Weave What We See"

Dakota Mace (Diné) MFA Exhibition

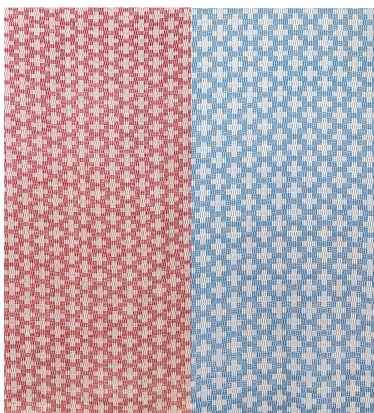
April 14-21

Opening Reception: April 14 6-8pm

Location: Art Lofts 111 N Frances St. Madison WI

Event url: <https://www.facebook.com/events/264130957368829/>

WE WEAWE WHAT WE SEE  
DAKOTA MACE MFA EXHIBITION



APRIL 14-21 2017    OPENING RECEPTION: APRIL 14 6-8 PM  
ART LOFTS 111 N FRANCES ST MADISON WI



## **Spring 2016 workshop-Twill Gamps**

Our Spring workshop will take place on April 22. Participants will make a twill gamp (sampler).

## **MISWEST WEAVERS CONFERENCE**

June 12-17. [www.midwestweavers.org](http://www.midwestweavers.org)

## **ART FAIR ON THE SQUARE**

Attention all Weavers:

One of the Midwest's most popular and highly regarded outdoor celebrations of the arts will return to the Capitol Square July 8 and 9, 2017 as MMoCA presents the 59th annual Art Fair on the Square. With its mix of music, entertainment, and outdoor dining, as well as nearly 500 artists exhibiting paintings, prints, photographs, sculpture, jewelry, handmade clothing and accessories, and fine craft, the fair draws nearly 200,000 visitors to Madison's Capitol Square.

You are invited to participate by volunteering to assist in the setup and management of the booth. The Madison Weavers' Guild applies for two adjoining booths.

**FALL SHOW AT OLBRICH GARDENS** Apply by May 22. Geke has information. The show takes place on October 28 and 29.

## **COMING EVENTS**

**June 12 – 17, 2017:** Midwest Weavers Conference, Indianapolis, Indiana  
Registration opens January 8, 2017 [www.midwestweavers.org/conference](http://www.midwestweavers.org/conference)

## **Area Weaving Stores:**

Fiberwood Studio. 2709 N 92nd, Milwaukee. 414-302-1849

Sievers. Birch Court, Washington Island. 920-847-2264

Mielke's Farm. 2550 Co. Rd 11, Rudolph. 715-344-4104

Bahr Creek Llamas and Fiber Shop. N 1021 Sauk Trail Rd, Cedar Grove. 920-668-6417

Studio S. Hwy A and 89, south of Whitewater. 608-883-2123

Susan's Fiber Shop. N250 Hwy A, Columbus. 888-603-4237

## **CLASSIFIEDS**

We will always welcome submissions of articles, reviews of books, shows or exhibits, letters to

the editor, classifieds, samples, artwork, etc. to include in future newsletters. If you would like to contribute, please send to Emily Nie, 2500 Bootmaker Dr., Beloit, WI 53511; 608-362-8062; ricordanza@charter.net. Note the deadline for submissions and ads is **the TENTH of the month**.

**Schacht Standard Floor Loom**---Low Castle. Maple, eight-harness, 46" wide weaving width. Purchased in 1983. Lightly used. Includes matching bench with bench bags, 2 reeds (12 and 15), warping board, 11" boat shuttle, heddle hook, and box of Handwoven magazines. \$1750.

Roberta Fiene  
Racine, WI  
kahili@tds.net

Madison Weavers Guild ~ Show & Tell Projects 2016-7

<b>Project:</b>	<b>Weaver:</b>
<div>space for photo (taken at meeting)</div>	
<b>Weave Structure:</b>	
<b>Source:</b>	
<b>Yarns</b> – indicate fiber content and size (e.g., 10/2 cotton), and colors	
<b>Warp:</b>	
<b>Weft:</b>	
<b>Equipment:</b> ____ - harness loom      ____ - dent reed	
<b>Sett:</b>	
<b>Warp:</b> ____ epi <b>Sleying:</b> _____ (number of threads per dent or pattern)	
<b>Weft:</b> ____ ppi	
<b>Notes:</b>	