



MADISON WEAVERS GUILD

Vol. 44, No. 7

March 2017

MWG BOARD

PRESIDENT: LAURIE ZIMMERMAN

SECRETARY: LINDA ALANEN

PROGRAM CHAIR: DIANNE RUCH

TREASURER: JANE VEA. janevea@sbcglobal.net

MEMBERSHIP CHAIR: SUSAN FORTNEY

SALES: GEKE DE VRIES

NEWSLETTER EDITOR: EMILY NIE. ricordanza@charter.net

HISTORIAN: PAT HILTS

WORKSHOP CHAIR: KATE LIEBER

EXHIBIT CHAIR: ANGIE ROBERTS

WEBSITE MANAGER: JULIE MOEHN

MONDAY, MARCH 20, 2017

7:00 p.m. Oakwood Village, Westmoreland Room.

BARRY OWENS AND BOUND WEAVE RUGS

Reminder: at the March meeting, photos will be taken for those who wish to have their photo as part of a pictorial directory of Guild members. It was felt that having a picture of a member might make it easier for each of us to remember who's who. The directory will only be available to paid members and will be distributed at a future meeting. For those who are concerned about privacy issues, this directory will not be sent via email nor be accessible on our website. It is also totally optional. So look pretty and smile at the camera on Monday!

Directions:

Oakwood Village is located on Mineral Point Rd. in Madison. Turn south on Island and take the drive to the left. Go past the Resale Shop and park in the visitor parking. The Westmoreland Room is in the Heritage Oaks Building. There is limited parking in front of the Heritage Oaks building.

Madison Weavers Guild Feb. 2017

MWG met at Oakwood West on Feb. 20, 2017. Twenty-eight members, new and old, were there to enjoy an evening of shared interests.

Chair reports were given.

Geke said that sales at the Olbrich Fine Arts Sale were good. That will occur again the last weekend of Oct. (28-29, 2017).

Art Fair on the Square is the weekend after July 4th. Guild members are welcome to join in. A downpayment of \$50 will hold your place.

Volunteers for the event are welcome. Signup with Emily Nie by March 1st.

Emily-have items for the newsletter to her by the 10th of the month.

Susan- handed out folders to the new members.

Vicky (for Angie) the Middleton Library display goes up March 4 at 9 a.m. Items and help are welcomed. The Guild has Pinney Branch Library display case reserved for Oct.2017 and February 2018.

Kate-Workshop in spring will possibly be crackle, kumihimo, or shadow weave. She has a Hammond 4 harness 40inch loom free to a new home. For Diane and programming- March will see Barry Owens with bound weave. April-Julie Moehn with Fiberworks . May-Mary Ann Fairbanks with super tech fibers.

Midwest Weavers Conference coming up in June in Indianapolis, offering 3-day workshops.

Geke and Rebecca going to Peru in late March, early April in case anyone is interested and wants to join them.

Kipp mentioned an Art Gallery Show beginning Mar. 3 in Lodi and Threaded Streams March 23-25, a Fiber Arts Studio Tour in Lodi, Baraboo, Portage and Prairie du Sac.

The Knit In will be at the Alliant Center. Check Madison Knitters Guild for details. Free admission and free market.

Fern Delaney delighted us all with her program on kumihimo braids. Many were inspired to try this engaging weaving. The end products have so many possible uses.

Show and Tell-

Ada Lai had dish cloths woven on a continuous strand loom, also Jane Grogan.

Sandra Granroth showed samples from the waffle weave workshop.

Carolyn Betz and Dakota Mace showed 8 different structures from their University weaving class. Dakota will have a masters show coming up. Randa Ferreira wore a jacket she had woven and embellished in sewing it together.

Angie will be willing to take photos in March for the directory.

High Fiber

March 3-31

RECEPTION

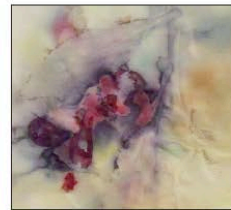
March 3

6-8 p.m.

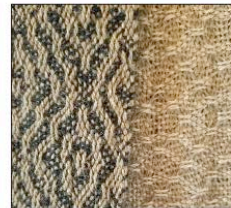


Art Gallery
141B Lodi Street
Lodi, WI 53555

Katherine
Hartline
McMahon
Hartline Designs



Jan Clingman
Lodi Alpacas at
Whistling Valley
Farm



Kipp Inglis
A Botanical Dyery



Dana Slowiak
dls studio



PROGRAM SCHEDULE:

Mar. Barry Owens-bound weave rugs, slate of officers put forth to be voted on in April

April : Vote and Julie Moehn- Fiberworks

May: Mary Ann Fairbanks- solar fabrics, annual meeting and election of officers

Our bylaws state that a slate of officers for consideration shall be presented at our March meeting for election at our April meeting. The following members have agreed to serve the Madison Weavers Guild for the 2017-2018 timeframe:

Laurie Zimmerman	President
Linda Alanen	Secretary
Kathy Derene	Treasurer
Susan Fortney	Membership Chair
Katie Lieber	Workshop Chair
Dianne Ruch	Program Chair
Geke de Vries	Sales Chair
Angie Roberts	Exhibit Chair
Emily Nie	Newsletter Editor
Julie Moehn	Website Manager
Pat Hilts	Historian

Please consider the following candidates and be prepared to vote at our April meeting. If there is anyone who would like to nominate themselves or someone else for a position, please contact Laurie Zimmerman at lazybeck@yahoo.com as soon as possible

In addition, all of the Board members need your assistance, specifically, we are looking for:

- a co-chair or backup for the Exhibit Chair
- members for the Workshop, Program and Sales Committees
- computer help for the Sales Chair

And lastly at the last Board Meeting, discussion was held about Succession Planning - that is, to have some sort of program in place so that a member who decides to step up for a Board position doesn't have to walk in blind. Each of the Board members will be working on a list of "things they do" and each of us will be looking for someone to shadow us and take our place when we "retire" from our position. If anyone is interested in being a Board Member - in the very near future or even down the line - for a year or two or three, please either contact Laurie or any of the Board Members. With all of us working together, the time and labor involved is actually quite minimal. So please thoughtfully consider your involvement in the Guild. Thank you.

EXHIBITS

GRAND OPENING WEEKEND!

THREADED STREAMS

Fiber Arts Trail Grand Opening Weekend

March 23 - 25, 2017

10:00 a.m. - 5:00 p.m.

Baraboo - Portage - Lodi - Prairie du Sac, WI



TEXTILE ARTIST KEYNOTE TALK

KAREN ANN HOFFMAN

"IROQUOIS RAISED BEAD WORK:
CULTURE ON A STRING"

March 24, 2017 Keynote Talk & Artists Reception
Doors Open 5:30 p.m. Cash Bar
Keynote Talk at 7:00 p.m.
Ringling House B&B 201 8th St Baraboo



JOIN US!

- 18 WORKSHOPS & CLASSES
- 16 STOPS ON THE TRAIL! OPEN ARTIST STUDIOS & SHOPS
- 2 MUSEUM TEXTILE EXHIBITS
- 2 FILM DOCUMENTARIES

MORE INFO:

WEB: www.midwestfiberartstrails.org

EMAIL: jennifer@midwestfiberartstrails.org



Portage, WI



Prairie du Sac, WI



Lodi, WI



Baraboo, WI

ANNOUNCEMENTS

VOLUNTEERS NEEDED We are teachers at Wingra School. We are starting a unit involving textiles with a group of students aged 5 - 14. We were wondering if you knew of any volunteers who would like to come in and demonstrate weaving to our students. Or is there another topic that they could share with our group? The unit will be starting on March 27th and go until April 7th. An ideal day would be a Tuesday or Thursday with the hours between 10:45 - 11:45 or 1:15 - 2:15.

Thanks for your help.

Sincerely,

Lisa Kass
Tresi Smyth
Kim Cotant

Wingra School
718 Gilmore St.
Madison, WI 3711

608-695-8750

Classes through MSCR

Madison School Community Recreation has classes in Fiber Arts that include Weaving 2 and several sewing classes for different levels. Weaving 2 is intermediate or advanced rigid heddle weaving on Mondays (4/3-5/22 \$120). Sewing and weaving classes are on pg.36 of the paper catalog. Website is www.mscre.org

Spring 2016 workshop-Twill Gamps

Clear off your portable looms to be ready for the April 22-23 Twill gamp workshop. Weavers will thread 3 or 4 twill patterns on their loom and treadle them as written or try other treadling sequences or colors as they are inspired. This will be a round robin workshop and a combination of 4 and 8 harness looms.

Cost: not more than \$50 + fiber fee if you need yarn

Place: Heritage / Westmorland room at Oakwood (our usual meeting spot)

Instructor: Emily Nie

Time: 9:30-4:30 both days

Please sign up at the March 20th meeting or contact
Ksliieber579@gmail.com

FUTURE WORKSHOP PROPOSAL

My goal as workshop chair is to provide at least 2 workshops each year. We have many talented weavers in our guild who have led workshops for us. Occasionally, it would be fun to bring in a well-known workshop leader.

I have talked to some members who have been to workshops at other guilds and Midwest Meetings that talk about the benefits of workshops with well-known weavers. The benefits include learning from a specialist in a weave pattern, computer software skills, new perspective on doing the usual loom setup tasks.

There are many options to think about: We could ask for 2 workshops, 1 for 4 harness and another that would require 8 harness looms. Perhaps we could have a combined workshop. And ask for a lecture at our meeting.

Potential Cost:

I would expect participants to pay more for these workshops (\$100-200 for 2-day workshop). Each participant would save money because we are not traveling or paying our lodging.

To compare this to taking a workshop at Siever's Fiber School (Washington Island, WI) or the Midwest Weavers Conference the workshop fees are \$240 and \$270 respectively for a 2-day workshop. Housing would be \$110 (no meals) in the Siever's dorm and \$225-335 (includes meals) in a college dorm.

We would have to pay a fee per day and Sarah's travel expenses. Right now, I am seeing if we can negotiate since she may be in town to visit family. I am asking the guild board to approve some financial support too. I am working on a budget.

I propose bringing in Sarah Saulson. Her website is

Sarahsaulson.com

About Sarah Saulson

Sarah is Fern Delaney's sister in law.

She started weaving as a child in Ann Arbor, Michigan, and has pursued fiber arts as a full-time profession for more than two decades. For many years, she sold her handwoven fashion accessories at juried craft shows, including ACC shows and retail craft shows in the northeast and mid-Atlantic.

She has been published in Handwoven (most recent 2007) and as a contributing editor (Now we are Eight column). Had a piece in Small Expressions at Milwaukee Museum of Art as part of 2016 HGA Convergence.

Workshops Philosophy

“Over time, I find I’ve evolved a teaching philosophy for weavers. My goal is to help participants build a conceptual framework that they can then apply to their own weaving . . . to empower themselves, shaping their own weaving destinies by having thinking tools that help with answering the weaving questions they may encounter in the future. In my hands-on workshops, I emphasize an integrated approach, where we study how threading, tie-ups and treadlings directly influence how and why shafts move in order to create interlacements of warp and weft. Because the emphasis is on building your personal understanding and empowerment as a weaver, my workshops are built around exploring at your own loom and then sharing our results rather than round-robin workshops. It’s not unusual for participants to have “ah-ha” moments during my weaving workshops!”

Workshops and Lectures I thought we could choose from, there are others on her site.

Celebrate 8 welcome to 8 harness weaving (2-5 day)

This on-loom workshop provides an overview of eight-shaft weaving, so participants can confidently take advantage of the full potential of their looms, expand their weaving vocabulary, and readily design projects for multiple shafts. Eight-shaft weaving opens up all sorts of possibilities including intriguing, but easy-to-weave twills; crepe; waffle-weave; double-weave, satin; as well as greatly expanded block weave design possibilities for twill, lace, Summer and Winter, and more. Each student spends the entire workshop at their own loom, weaving a series of explorations. This workshop is an outgrowth of the research I’ve done on 8-shaft weaving for my column in Handwoven, “Now We Are Eight.”

Understanding Summer and Winter (1-5 day)

This program is designed for weavers with little or no previous experience designing and weaving this versatile weave structure. It focuses on understanding the simplicity and logic of its structure, so participants can easily go on to design their own Summer and Winter projects rather than rely on recipes.

This program is designed for beginners who know the basics of drafting and intermediate weavers. In the workshop format the participants bring pre-warped table or floor looms. They will explore the various treadling systems, and explore color use.

More the Merrier: Combining weave structures (1-3day

We will discover ways to use all those harnesses on your loom, by exploring how to combine more than one weave structure in the same piece. Following some simple principles, this approach yields handwoven cloth with rich visual and textural variety. We will start by adding tabby selvages, and then create drafts with intriguing structural squares and rectangles surrounded by twills and plain weave. Each woven sample can be a completed coaster or mug rug. We will make the most of simple weave structures, including tabby, all kinds of twills, laces, basket weave and more. Workshop level: Participants must be able to warp a loom pre-workshop and read drafts. In the workshop, each participant will work at their own looms.

Necessary equipment: Blackboard or Whiteboard; chalk or markers, looms of at least 8 shafts.

Lectures:

Handmade cloth: Exploring Ritual. My recent work includes Jewish prayer shawls (talism). This has led me on an exploration of handmade cloth and its role as a ritual object in traditions across time and space. It also invites the celebration of tradition, which has taken me on a literal journey to museums in New York and Israel researching a little known and now virtually lost fiber technique called Shapanyer Arbet.

Berta Frey: Tradition/Innovation. In this lecture, we will celebrate the career of American Handweaver, Berta Frey. The images will be actual examples of her work from the collection of the Museum of American Handweaving, in Clayton, New York. Frey is noted for her always helpful book, *Designing and Drafting for Handweavers*. Examining her

actual weavings reveals a masterful, inventive weaver, well versed in tradition, yet willing and able to take it to new places.

I would like to know who would be interested in this workshop. Please contact me at kslieber579@gmail.com Other comments are welcome, too.

Kate Lieber

MISWEST WEAVERS CONFERENCE

June 12-17. www.midwestweavers.org

ART FAIR ON THE SQUARE

Attention all Weavers:

One of the Midwest's most popular and highly regarded outdoor celebrations of the arts will return to the Capitol Square July 8 and 9, 2017 as MMoCA presents the 59th annual Art Fair on the Square. With its mix of music, entertainment, and outdoor dining, as well as nearly 500 artists exhibiting paintings, prints, photographs, sculpture, jewelry, handmade clothing and accessories, and fine craft, the fair draws nearly 200,000 visitors to Madison's Capitol Square.

You are invited to participate by volunteering to assist in the setup and management of the booth. The Madison Weavers' Guild applies for two adjoining booths.

COMING EVENTS

June 12 – 17, 2017: Midwest Weavers Conference, Indianapolis, Indiana
Registration opens January 8, 2017 www.midwestweavers.org/conference

Area Weaving Stores:

Fiberwood Studio. 2709 N 92nd, Milwaukee. 414-302-1849

Sievers. Birch Court, Washington Island. 920-847-2264

Mielke's Farm. 2550 Co. Rd 11, Rudolph. 715-344-4104

Bahr Creek Llamas and Fiber Shop. N 1021 Sauk Trail Rd, Cedar Grove. 920-668-6417

Studio S. Hwy A and 89, south of Whitewater. 608-883-2123

Susan's Fiber Shop. N250 Hwy A, Columbus. 888-603-4237

CLASSIFIEDS

We will always welcome submissions of articles, reviews of books, shows or exhibits, letters to the editor, classifieds, samples, artwork, etc. to include in future newsletters. If you would like to contribute, please send to Emily Nie, 2500 Bootmaker Dr., Beloit, WI 53511; 608-362-8062; ricordanza@charter.net. Note the deadline for submissions and ads is **the TENTH of the month**.

MADISON WEAVERS GUILD

INVITATION TO JOIN 2016-7

The Madison Weavers Guild welcomes, as a member, any person interested in weaving and fiber arts.

Meetings and the monthly programs are the **third Monday of the month**, September through May. Members are sent a monthly newsletter that includes program announcements, reports on general guild activities, notices for interest groups, sales opportunities information, occasional swatches, listing of local yarn and weaving supply stores, and classifieds. Other advantages to members are the membership directory, eligibility for participation in sales, membership rate for workshops, social events, and perhaps most important -- the enthusiasm, support and sharing of fellow members.

Memberships are \$20.00 per year, \$15.00 for new members (first year), and \$5.00 for students. The membership year begins in September. Members enrolled by the October meeting will be included in the membership directory.

Please fill out this form and bring it and your check (**payable to Madison Weavers Guild**) to a meeting or mail them to: Jane Vea, 601 Bordner Drive, Madison WI 53705.

MADISON WEAVERS GUILD Membership Form for 2016-7

NAME:	PHONE:	Membership Category <input type="checkbox"/> New \$ 15.00 <input type="checkbox"/> Renew \$ 20.00 <input type="checkbox"/> Student (w/ ID) \$ 5.00
ADDRESS: (include Zip)		
E-MAIL: WEBSITE:		

What interests you about being a member of the guild?

Ideas for future programs. What topics would you like to learn more about?

Other guild activities you'd be willing to take part in:

- ☐ Holiday Party (help plan and organize)
- ☐ Members' show (help plan, organize, execute)
- ☐ Newsletter (write, find articles)
- ☐ Develop/update website
- ☐ Weave a swatch for the newsletter
- ☐ Serve on the board
- ☐ Demonstrate for local schools
- ☐ Give a mini workshop, program at a meeting
- ☐ Other (what?)

Areas of interest:

- ☐ functional items
- ☐ pattern drafting
- ☐ basketry
- ☐ ikat
- ☐ tapestry
- ☐ rugs
- ☐ sales
- ☐ spinning
- ☐ dyeing
- ☐ felting
- ☐ double weave
- ☐ field trips
- ☐ Other (what?)

Your looms:

For new members, how did you find out about the guild?

Madison Weavers Guild ~ Show & Tell Projects 2016-7

Project:	Weaver:
space for photo (taken at meeting)	
Weave Structure:	
Source:	
Yarns – indicate fiber content and size (e.g., 10/2 cotton), and colors	
Warp:	
Weft:	
Equipment: ____ - harness loom ____ - dent reed	
Sett:	
Warp: ____ epi Sleying: _____ (number of threads per dent or pattern)	
Weft: ____ ppi	
Notes:	